



PRODUCT DESCRIPTION

DHLA3000 is newly developed 25dB low-noise design. It adopts 60W high-torque permanent magnet DC motor with a maximum load of 3000-3500N, the maximum speed can reach 110MM/S. It is a high-quality electric linear actuator. This product has stable operation, the same thrust and pull, and is adaptable to the environment Good performance, novel design, small size and high precision.

DHLA3000 electric linear actuator outer aluminum tube is treated with 27 oxidation processes, which has high hardness and a more beautiful appearance, Optional 304 stainless steel tube inner tube can be used in harsh industrial environments.

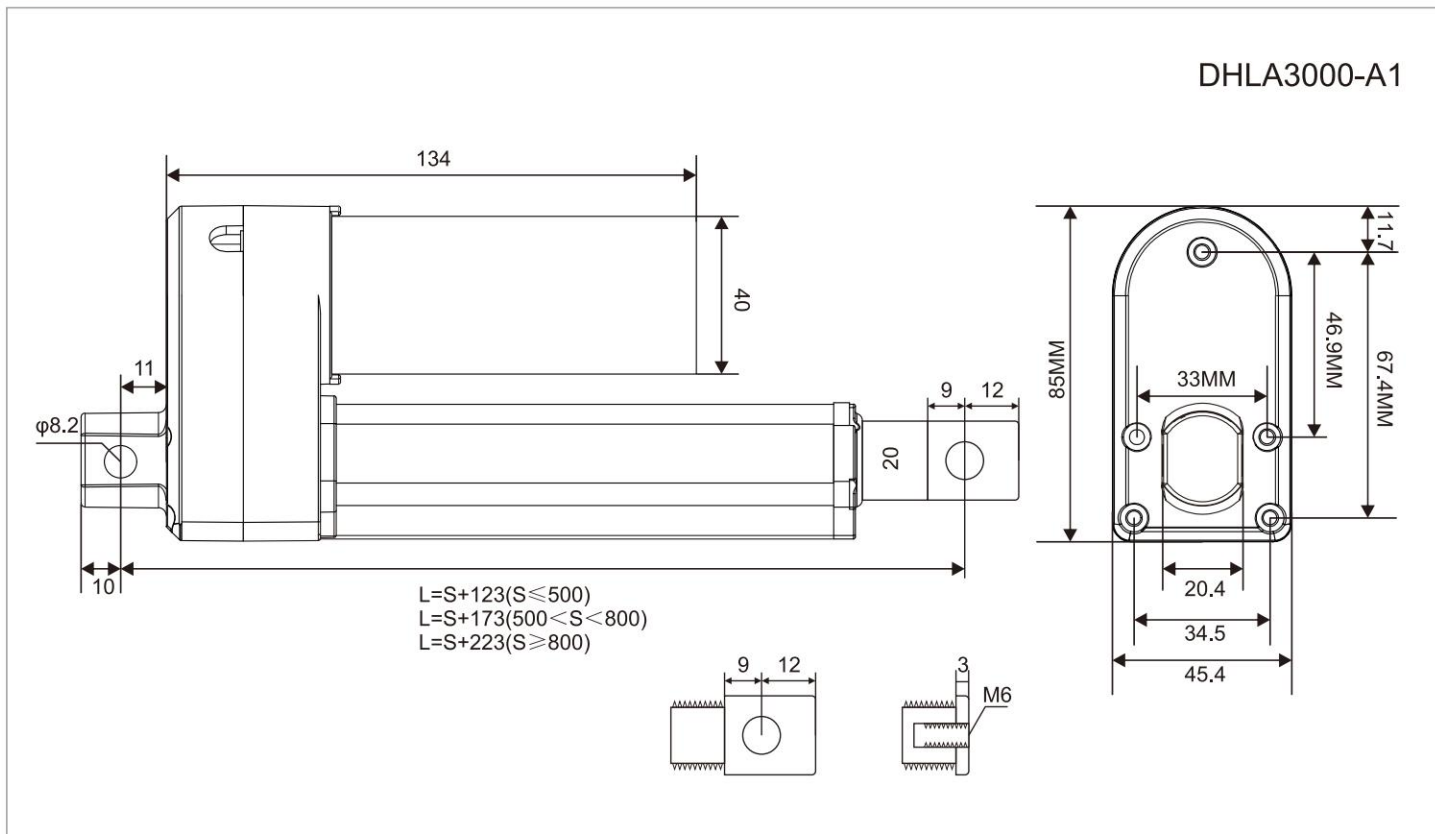
TECHNICAL PARAMETERS

Voltage	DC24V																		
Speed (MM/S)	5		10		15		20		30		40		50		66		88		110
Load Pull Capacity(N)	3000		1400		1000		800		500		400		300		200		150		100
Load Push Capacity(N)	3000		1400		1000		800		500		400		300		200		150		100
Self-locking Capacity(N)	3000		1400		1000		800		500		400		300		200		150		100
Voltage	DC12V																		
Speed (MM/S)	5		10		20		30		40		66								
Load Pull Capacity(N)	2400		1200		600		400		300		150								
Load Push Capacity(N)	2400		1200		600		400		300		150								
Self-locking Capacity(N)	2400		1200		600		400		300		150								
Stroke Length	30MM~1600MM																		
Operating Temperature	-25°C~+85°C																		
Limit Switches	Built-in																		
Operating Frequency	10% max 2min continuous use																		
Inner Tube	Aluminum tube																		
Lead screw Type	Type T																		
Installation Method	M6/M8/M10 Screw						Flat Plate						Φ6.2 / Φ8.2 / Φ10.2 Lifting Lug						

Optional Configuration

◆ Hall Sensor ◆ Magnetic Induction Switch ◆ Upper And Lower Limit Feedback ◆ 304 Stainless Steel Pipe ◆ IP66 Waterproof

OUTLINE DIMENSION DRAWING



OUTLINE DIMENSION DRAWING

